

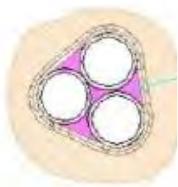
Protecta FR Board - Concrete Wall min 75mm Plastic Conduits (single or in bundles)

System/FPA Register ID# FC102

Installation Instructions

1. Before installing Protecta® FR Board ensure that the surface of all service penetrations and surrounding construction is free from all loose contaminants, dust and grease.
2. The coated side of the board should be flush with the surface of the wall on both sides.
3. Cut the required board(s) to suit the aperture dimensions and type and size of service penetration(s). All exposed and cut edges of the board can be sealed with Protecta® FR Coating or Protecta® FR Acrylic prior to fitting which will act as an adhesive and ensure a smoke tight seal.
4. Apply two layers of Protecta FR Wrap to each side of wall. All joints, gaps or imperfections in the installed seal must be filled with Protecta® FR Acrylic on both sides.
5. Protecta® FR Board can be over-painted with most emulsion or alkyd (gloss) paints.

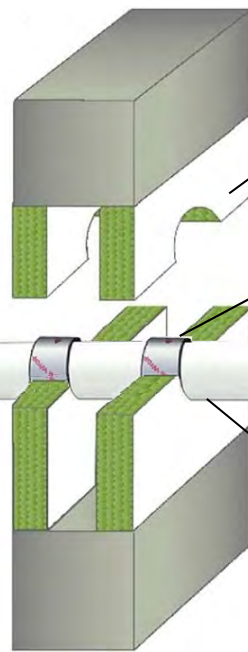
NOTE: Smaller conduits can be bundled up to 110mm diam and wrapped as a single unit.
Fill annular space with FR Acrylic.



Maximum aperture unlimited width by 1200mm high

Cables ≤ Ø14mm single or in a bundle

Plastic conduit partially or fully filled with cables



Optional Pattress Fit



2 layers 50mm FR Board 1-S or 2-S

Protecta Pipe Wrap 2 layers of 50mm wide fitted both sides

All services and openings must be sealed with FR Acrylic both sides

Pattress Fitting permitted Max aperture 1100 x 1100mm
See Warringtonfire FAS200262 page 9

Minimum separations and limitations

An aperture can include several services, and they may also be different. The minimum permitted separation between adjacent seals/apertures is 200mm. Services should be a minimum of 25mm from seal edges. Services within the system Protecta® FR Board seal do not require a minimum separation, except pipes where pipe insulation penetrates the seal and plastic pipe penetrations which should be a minimum of 30 mm from other services in the aperture. The total amount of cross sections of services (including insulation) should not exceed 60% of the penetration area.

Products	Protecta FR Board Protecta FR Acrylic Protecta FR Pipe Wrap
Application	Fire stopping of plastic conduits in concrete walls
Construction	Minimum wall thickness of 75mm and comprise concrete, aerated concrete or masonry, with a density of ≥ 650 kg/m3

Fire & Sound classification

For 100mm walls:

All conduits may be empty, partially filled or filled with cables up to 14mm diam - conduits may be PVC-U, PVC-C, PE, PE-HD, PEX, PP, PP-R, PP-H:

All single conduits ≤ Ø110mm diam

FRR -/120/90

Bundles ≤ Ø110mm of smaller conduits (may be a mixture of PVC to 32mm, others to 40mm)

FRR -/90/90

For 75mm thick walls:

All above FRRs approved subject to maximum FRR -/60/60 and max aperture of 900 x 1200mm (See page 9)

Smoke-safe (<0.1m³/h smoke leakage at 200Pa)

Sound reduction (seal only)

STC 52

As a part of our policy of on-going product development and testing, we reserve the right to modify, alter or change product specifications without giving notice. All information contained in this document is given in good faith and is provided for guidance only. Any drawings provided are for illustrative purposes only. As Polyseam has no control over the methods or competence of installation and of prevailing site conditions, no warranties, expressed or implied, is intended to be given as to the actual performance of the product mentioned or referred to herein and no liability whatsoever will be accepted for any loss, damage or injury arising from the use of the information given.

For all technical details on the products specified please refer to the technical data sheets that can be found on www.protecta.eu

Signed and approved:

Sheet size: Drawn date & no:

A4

5/3/19

Scale:

NTS

Drawn by:

K.B